

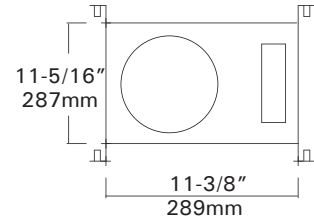
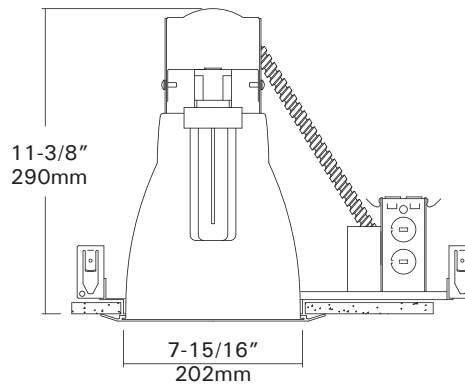
# DLF-866

## 8" NON-IC Flat Frame-in-kit For

(1)13W, 18W, 26W, 32W, 42W, 57W or 70W DTT/TTT Lamps

Catalog #		Type
Project		Date
Prepared by		

**FLUORESCENT**



### DESCRIPTION

8" aperture flat frame-in kits for (1) vertical CFL lamps.  
 These are designed for use in non-insulated ceiling for general and task lighting.  
 Heat sink aluminium socket housing, with vertically adjustable lamp holder may produce various focuses for different lamp types.

### DESIGN FEATURES

Ceiling Cut-out : 8-1/8"  
 Lamp, Max, Watt. : Max. 70W

#### Mounting Frame

- Galvanized steel construction.
- Housing adjusts for ceilings up to 1-1/4" thick.

#### Junction Box

- Listed for through branch circuit wiring. (Max. 8 No 12 AWG 90°C branch circuit conductors. (4 in, 4 out)
- (5) 1/2" knockouts with true pry-out slots and (4) knockouts with Romex cable clamp.
- Ground wire provided on J-box.

#### Reflector

- Anodized clear, haze, gold, champagne, pewter color finished full reflectors. And anodized reflectors with black or white milled groove baffle collar and glass Lens for shower trim.

#### Bar hangers

- 24" Bar Hangers provide stability and support on joists and T-Bar Grid ceilings.
- Housing can be positioned at any point within 24" joist span.
- Score lines allow "toeless" shortening for 12" joists. Bar hangers may be repositioned 90 degrees.
- Integral T-bar clips snaps onto T-bars and no additional clips are required.

#### Trim Ring

- White plastic ring or plated chrome, satin nickel, natural steel color ring.

#### Socket

- G24Q/GX24Q socket for use 4 pin DTT, TTT lamps.

#### Socket Cup

- Heat sink aluminum cup with vertically adjustable lampholder is used to control multiple beam spreads.

#### Lamp

- Compact Fluorescent lamps.
  - \* DTT-Double twin tube (Quad/CFQ)
    - (1) 13W DTT (4 pin)
    - (1) 18W DTT (4 pin)
    - (1) 26W DTT (4 pin)
  - \* TTT-Triple Twin Tube (CFTR)
    - (1) 18W TTT (4 pin)
    - (1) 26W TTT (4 pin)
    - (1) 32W TTT (4 pin)
    - (1) 42W TTT (4 pin)
    - (1) 57W TTT (4 pin)
    - (1) 70W TTT (4 pin)

#### Ballast

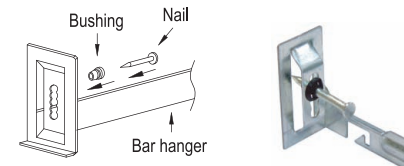
- Class P Thermally protected by internal fuse (3 amp fast blow), Multi-volt electronic ballast or thermal cut-out switch in magnetic ballast.
- High Power Factor Multi-volt Electronic ballasts for 4 pin type compact fluorescent lamps mounted on J-box door for easy access from inside of fixture.

#### Listing

- UL, c-UL listed for damp location.
- UL, c-UL listed for feed through.

#### Just-A-Nail

Adjustable nail hanger bar for easy alignment.



#### JUST-A-NAIL

- Pre-installed nail bars with vertical slots are used to evenly align the bars horizontally after nailing halfway into wood joists.

#### Optional "Quick Connect" Push-in wire connectors.

- Three "Quick Connectors"
- Pre-installed push-in wire connectors for fast and easy wiring.

### Ordering Information

Housing	Ballast	Lamp(s) Watt.	Option	
DLF-866	-N : 120V NPF Magnetic -H : 120V HPF Magnetic -NE : 120V NPF Electronic -HE : 120V HPF Electronic	-E : 120V/277V HPF Electronic	113 : (1)13W 142 : (1)42W 118 : (1)18W 157 : (1)57W 126 : (1)26W 170 : (1)70W 132 : (1)32W	-EM : Emergency w/ Remote Test Switch -C : Quick Connectors

Example : DLF-866-E142

# Trims

## 8" Vertical Compact Fluorescent Trims For

DLF-866, DLF-186, DLF-186R

Catalog #		Type
Project		Date
Prepared by		

**FLUORESCENT**

### TM-189R TM-189RF

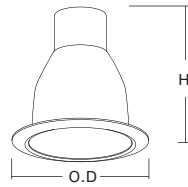
**Specular Open Reflector  
70W TTT**

White Plastic Trim Ring

O.D : 9-7/16"

Height : 7-7/8"

\*Symbol (RF) is for Self-flange



TM-189R-HC

TM-189R-GD

TM-189RF-HC

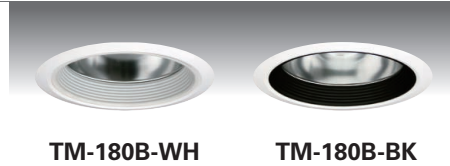
### TM-180B

**Baffle w/ Reflector  
70W TTT**

White Plastic Trim Ring

O.D : 9-7/16"

Height : 7-7/8"



TM-180B-WH

TM-180B-BK

### TM-181

**Wall Wash w/ Kick-off Plate  
70W TTT**

White Plastic Trim Ring

O.D : 9-7/16"

Height : 7-7/8"



TM-181-HC

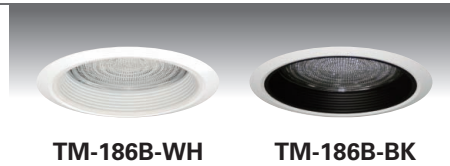
### TM-186B

**Baffle w/ Fresnel Lens  
42W TTT**

White Plastic Trim Ring

O.D : 9-7/16"

Height : 7-7/8"



TM-186B-WH

TM-186B-BK

### TM-186R

**Reflector w/ Fresnel Lens  
42W TTT**

White Plastic Trim Ring

O.D : 9-7/16"

Height : 7-7/8"



TM-186R-HC

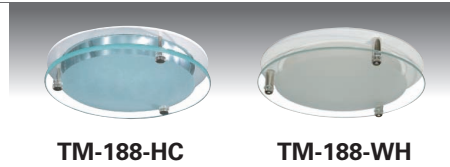
### TM-188

**Reflector w/ Frosted Drop Lens  
70W TTT**

White Metal Trim Ring

O.D : 9-7/16"

Height : 7-7/8"



TM-188-HC

TM-188-WH

### TM-188S

**Reflector w/ Frosted 3.5" Center  
Hole in Drop Lens  
70W TTT**

White Metal Trim Ring

O.D : 9-7/16"

Height : 7-7/8"



TM-188S-HC

### TM-1859

**Reflector w/ Cross Louver Blade  
42W TTT**

White Plastic Trim Ring

O.D : 9-7/16"

Height : 7-7/8"



TM-1859-HC

### TM-187

**Reflector w/ Frosted Lens  
on Surface  
42W TTT**

White Plastic Trim Ring

O.D : 9-7/16"

Height : 7-7/8"



TM-187-HC

- ◆ White plastic ring standard. Also available with metal rings.
- ◆ All trims are damp location, Lens trims are wet location listed.

## ORDERING INFORMATION

Choose the catalog / finish codes that best suit your needs and enter it on the appropriate line.

TRIM MODEL	REFLECTOR	LENS	BAFFLE	METAL RING
	CL :Clear	FR :Fresnel	WH :White	WH :White
	WH :White	AS :All Sanded	BK :Black	BK :Black
	GD :Gold	CL :Clear	SN :Satin Nickel	SN :Satin Nickel
	MA :Matte Platinum	CS :Center Part Sanded	AN :Antique Nickel	AN :Antique Nickel
	CP :Champagne	CV :Convex Prismatic	AC :Antique Copper	AC :Antique Copper
	PR :Pewter		MO :Mocha	MO :Mocha
	HC :Haze Clear		CA :Cappuccino	CA :Cappuccino
			CH :Chrome	CH :Chrome
			UN :Natural Steel	UN :Natural Steel
			PB :Polished Brass	PB :Polished Brass

Examples:

TM-189R-HC-WP = Haze Clear Reflector

TM-180B-BK-WP = Black Baffle w/ Clear Reflector